



**SCAN DSA 3 and 4**

**GB**

02/03

**Krog Iversen & Co. A/S – DK-5492 Vissenbjerg**

Congratulations on your new SCAN DSA fire cassette. We are confident that you will enjoy your new cassette, especially if you follow the instructions and advice given below.

An original SCAN DSA cassette is delivered with a sign with the following information: Type of cassette, output, approvals, and registration number .

## INSTRUCTIONS FOR INSTALLATION

In the SCAN DSA cassette you will find the following:

1 oven mitten

1 handle to operate the shaking grate (SCAN DSA 3)

Fitting for the flue collar

1 set of screws and hexagon spanners

Firelighters for the first lighting

### Before the Cassette is Connected to the Chimney:

Contact your local authorities to obtain the existing fire- and building regulations regarding the installation, or ask your local experts in that field, e.g., the chimney sweep, to install your cassette. All SCAN DSA cassettes are closed fireplaces.

### Mounting of the connecting piece:

The connecting piece is fastened underneath the top plate.

### CONNECTION TO THE CHIMNEY

We recommend that the cassette is installed by a professional stove/fireplace dealer. The cassette should not be connected to a chimney of which the inside diameter is smaller than 175 cm<sup>2</sup> (ø 150 mm).

Regarding chimney draught: please see Instruction for Use.

Please note that the cassette, chimney and pipe should be installed in a way that they can be cleaned easily.

## INSTRUCTION FOR USE

### Type of wood and normal amount of fuel, as well as information for the chimney calculation:

Type of Cassette	Connecting piece	Output kW	Amount of fuel kg/h (maximum)	Chimney draught Pa (minimum)
SCAN DSA	Ø mm			
3	150	6	2,1	15
4	150	6	2,1	15

Temporary information as regards the DS-Approval (Denmark).

**First Time of Use:**

The paint will harden the first time the cassette is used. This will result in a burned smell, which, however, disappears again when the room is thoroughly aired.

**LIGHTING AND STOKING****Primary air for the lightning:**

The handle for the primary air (see sketch, no. 7) is underneath the door at the left side of the cassette. By pulling out the handle the primary air is opened. The primary air should be fully opened in approximately 2 minutes during lightning and stoking.

**Lightning:**

For lightning use pieces of crumbled paper (newspaper) and/or firelighters, and about two kgs wood (small pieces) on top of the paper. Do never use oil, gas or other flammable liquids!

The combustion air (see sketch, no. 6) should be fully opened. Paper and/or firelighters are lighted and the door remains slightly open. When the fire has caught on well, after about 10-15 minutes, the cassette is ready for the first portion of wood, and the combustion air and primary air are adjusted according to the following diagrams.

Depending on the chimney draught the position of the air valves can change.

**Air Valve Position:**

Type of Cassette	SCAN DSA 3	SCAN DSA 4
Combustion air, open	60%	60%
Primary air during lightning	100%	100%

**Stoking:**

Use the amount of fuel previously specified and ensure that the wood has the prescribed size. Do not pack the wood too closely - this is important in order to obtain an optimal airflow in the combustion material. Close the door after approx. 2 min. To avoid overheating, close the ash pan (SCAN DSA 3) as soon as the fire has caught on well. The ash pan must only be opened during lightning and stoking.

Please make sure that the right amount of fuel is used (according to the previous table). Otherwise the temperature in the chimney can be too high and the efficiency too low and a damage of the chimney can occur.

**Stoking During Spring Time and Autumn:**

At outdoor temperatures of more than 15°C, the cassette may be under fired, and a so-called "cold" combustion will build-up. The result will be an increasing formation of soot in the smoke ducts of the cassette, the chimney connector, and in the chimney. To avoid the soot build-up, we recommend that you clean the smoke ducts more frequently and increase the supply of combustion air. Small pieces of wood should be used, and fuel should be added more frequently.

**Chimney Draught:**

The chimney draught depends on the weather conditions. In stormy weather, you may reduce the chimney draught by closing the damper in the smoke pipe (if a damper has been installed). If the chimney draught is strong, the combustion air supply must be reduced additionally.

**Room Ventilation:**

During the combustion, oxygen taken from the room air is used. In order to get sufficient air for the combustion, leave the windows half open in well-insulated rooms or have a fresh-air intake installed.

**Cleaning:**

Be careful when you empty the cassette for ashes. There may be glows left as long as 24 hours after the cassette was last used. The ash may, when it is cold, be placed in a garbage bag.

## COMBUSTION CHARACTERISTICS OF DIFFERENT WOOD TYPES:

Type of Tree	Combustion value per m3 (in kWh)	Combustion value per kg (in kWh)	Notes
<b>Beech</b>	2.100	4.0	long, continuous fire
<b>Oak</b>	2.100	4.2	long , continuous fire
<b>Birch</b>	1.900	4.3	nice flame image
<b>Pine and Douglas Larch</b>	1.700	4.4	fast, crackling heat
<b>Spruce</b>	1.500	4.5	fast, crackling heat

### Storage of the Wood:

The correct storage of the wood is one of the main conditions of an environment-conscious combustion. Only hereby are you guaranteed optimal combustion values, and that the nature is not unnecessarily polluted.

- \* The wood should be stored in an airy, sunny, and dry place (ideal: South side)
- \* There should be about a hand's breadth distance between each layer
- \* Poplar and spruce should be stored at least one year before being used as fuel
- \* Lime, alder, and birch should be stored at least one and a half year before being used as fuel
- \* Beech, ash, and fruit tree should be stored at least two years before being used as fuel

### Soot Free Glasses:

The cassette is constructed to keep the glasses clean when the combustion air intake is fully opened. The more you close the combustion air, the greater is the risk for sooty glasses. Whenever a new portion of wood is placed in the cassette, it is necessary to open the combustion air completely, and the air intake must not be reduced until there are clear flames all around the wood. Max. humidity of the wood: 20%.

### Fire Bricks:

Little cracks may arise in the firebricks because of a minor content of water, especially if the cassette is overheated during the first firing. These cracks do not influence the efficiency of the cassette and are not covered by the guarantee.

If a spare part is needed, please state the number of the firebrick (no 1-4). The number shows also the way of mounting the firebricks.

## MAINTENANCE INSTRUCTIONS

The cassette is cleaned with a moist cloth. Spray lacquer is available for repair of possible damages/scratches. Your dealer has the right spray in the right colour. As there may be minor colour differences, it is recommended to repair larger areas with natural borders. You will get the best result if the cassette is repaired while it is warm (remember a good airing during the repair). A possible change of colour to grey is caused by over-firing, i.e. you have used more wood than recommended.

### Cleaning of Glass:

By burning wet wood or lighting with closed dampers, the doors may become sooty. The glasses are however easily cleaned by use of a special cleaning fluid, which is available at your dealer. Or as follows: Dip a moist cloth or an old newspaper in the ashes and use this to clean the glass. Attention! The ashes should not get into contact with your skin! Wipe with a dry cloth. The ceramic door joint must not get wet.

### Ceramic Packing Cord:

All SCAN DSA cassettes are equipped with ceramic packing cord to ensure the tightness of the doors and the glasses. This packing cord is a wearing part and must be changed from time to time. Please consult your authorized dealer in this case.

## **MOUNTING/DISMOUNTING OF DOORS**

In general, we recommend that you leave the dismantling of the door to the authorized dealer.

1. Close the door.
  2. Loosen the screws
  3. Remove the door.
- Mounting is made in reverse order.

## **REPLACEMENT OF GLASS:**

Dismount the door and place it on a plane surface with its back upwards. Remove all the screws of the inner frame. Remove the inner door and replace the glass. Change the ceramic packing cord if necessary. Remount the inner frame and remount the door on the cassette. Please note that the glass must not be firmly fixed.

## **MOUNTING OF THE CERAMIC SMOKE DEFLECTOR**

A ceramic smoke deflector is delivered with all SCAN DSA cassettes. Place the smoke deflector plate according to sketch 5; make sure that it is placed symmetrically in the cassette, i.e., with even amounts of free airspace on each side.

By cleaning the chimney and pipe soot can fall down on the plate. Remove the soot by tipping the plate. The soot will fall into the combustion chamber.

Note: Skamol is a porous material, and can break easily. The plate is a wearing part, and can/must be replaced after some time. (The Skamol plate is not covered by the guarantee).

## **TROUBLE SHOOTING**

- |                                    |   |
|------------------------------------|---|
| Smoke:                             | <ul style="list-style-type: none"><li>- Insufficient chimney draught!</li><li>- Check if the chimney has the right dimension.</li><li>- Check if the smoke pipe or chimney is blocked.</li><li>- Check if the chimney has the right height compared to the surroundings.</li><li>- Is the combustion air and ash grate at the right position?</li><li>- Is there low pressure in the house (basement, ventilation, cooker hood)?</li><li>- Is the wood dry?</li></ul> |
| The wood burns too fast:           | <ul style="list-style-type: none"><li>- Are the air valves adjusted correctly according to the instructions?</li><li>- Is the smoke deflector plate placed correctly?</li></ul>   |
| Sootend glass:                     | <ul style="list-style-type: none"><li>- Is the combustion air valve adjusted according to the instructions?</li><li>- Is the wood dry?</li><li>- Is the chimney draught sufficient?</li></ul>   |
| Sootend chimney:                   | <ul style="list-style-type: none"><li>- Incorrect combustion!</li><li>- Is the wood dry?</li><li>- Are the air valves adjusted correctly according to the instructions?</li></ul>   |
| The shaking grate is stuck:        | <ul style="list-style-type: none"><li>- Check if a piece of wood, a pin or the like is stuck.</li><li>- Is the bar placed/mounted correctly?</li></ul>  |
| The cassette's surface turns grey: | <ul style="list-style-type: none"><li>- Over heating - please refer to maintenance instructions</li></ul>   |
| The cassette does not heat:        | <ul style="list-style-type: none"><li>- Use of moist wood. The energy is used to dry the wood.</li></ul>  |

## **Warranty conditions for SCAN wood-burning products**

All SCAN wood-burning stoves and inserts are made of first-class material and are subject to a strict quality control, before they leave the factory. However, an error may occur, wherefore we back all SCAN wood-burning stoves and inserts with an extensive five years limited warranty.

The warranty covers all parts that may require replacement, from a failure that was caused in the judgement of Krog Iversen & Co. A/S, to be a defect in material or workmanship.

This warranty is given to the first retail purchaser (other than for the purposes of resale) only and is not transferable. This warranty does not cover damage resulting from other than defects in material or workmanship.

### **Specifically this warranty does not cover:**

Wearing parts such as fire bricks, ceramic smoke deflector, shaking grate, glass panes, tiles, and gaskets (other than damages that are visible at the time of delivery)

Defects caused by outhere chemical and physical actions during transport, in stock, during the installation, or later.

Sooting caused by a bad chimney draught, humid wood, or wrong service.

Costs caused by extra heating costs in connection with repair.

Transport costs

Costs in connection with dismantling and mounting of the unit.

### **The warranty is invalid:**

If the installation or service is performed by someone other than an authorized installer, or if the installation is not in conformity with installation instructions and/or local fire and building regulations.

At wrong use of the stove and use of non-allowed fuel (see Instructions for Installation).

If the serial number has been removed or defaced.

If service for defects covered under this warranty is performed by other than an authorized SCAN dealer or contrary to Krog Iversen & Co. A/S' instructions.

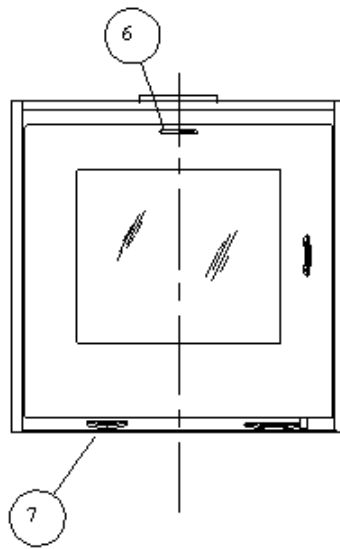
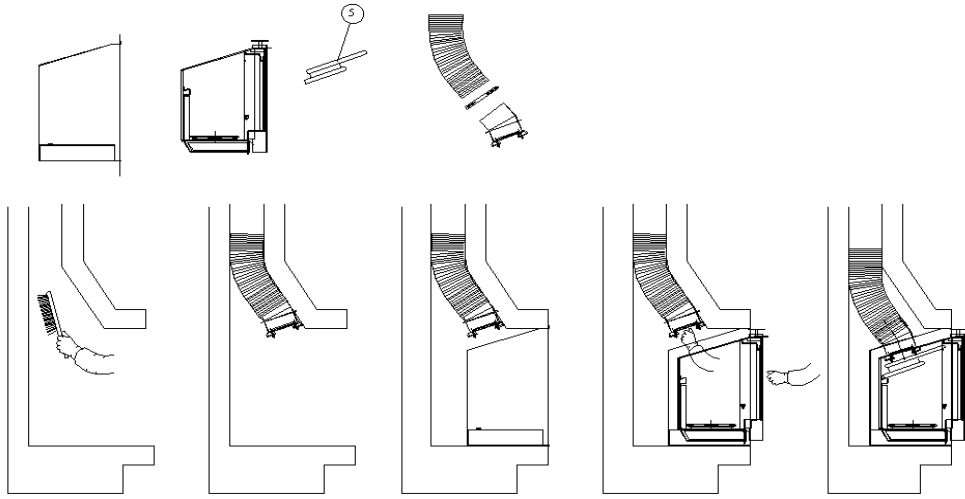
At any change in the original condition of the SCAN-product or its accessories.

This warranty applies only to SCAN-stoves or inserts sold in the country in which it was originally delivered and only on presentation of the invoice from an authorized SCAN-dealer. The date of delivery must appear from the invoice.

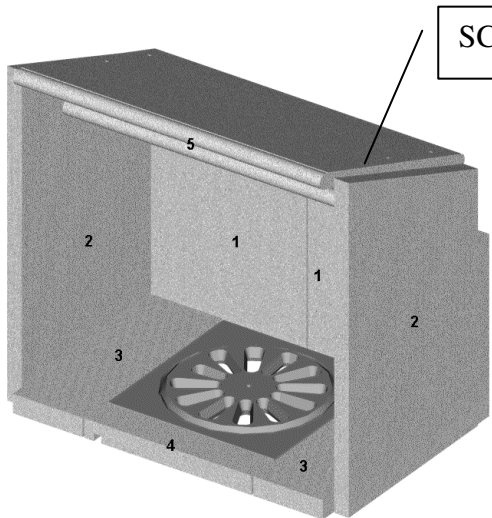
### **Settlement of the complaint**

The settlement of the complaint is done by the responsible dealer.

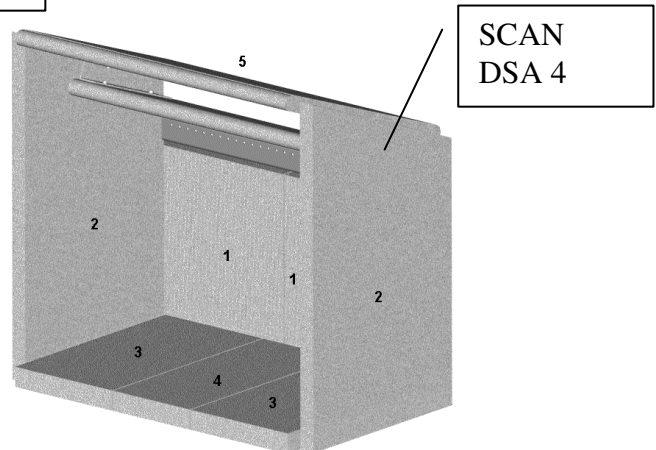
# INSTRUCTION FOR INSTALLATION



**Combustion chamber:**



**SCAN DSA 3**



**SCAN DSA 4**